

# VIVOTEK

A Delta Group Company



## Unveils the Night in True Color

### Chroma24 AI Camera Series

Powered by a large aperture, large sensor, and advanced AI-ISP algorithms, it ensures accurate color reproduction, clearer motion details, and clean, dependable imaging for reliable 24/7 visibility.



Watch Video



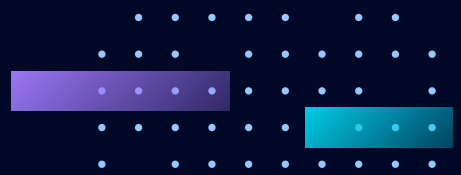
**VIT04A-W**  
4MP Turret AI Camera

- Max. Res. 2688x1520
- $f = 2.8 \text{ mm}$ , F1.0
- HFOV 103.4°
- 30m IR/ Warm Light
- 0.003lux @ F1.0 (Color)
- 0 lux with IR on
- IP66, IK10



# VIVOTEK

A Delta Group Company



## Choose Your Perfect Panoramic Camera

One camera sees everything multiple cameras miss



Panoramic View

Up to  
**18**MP

Up to  
**10**  
Year Warranty



AI Analytic

### Hybrid Cloud Management

Seamlessly transition to fit your needs



VIVOTEK AI Camera



NVR  
CORE+ AI



VORTEX Cloud



VORTEX Camera



NDAA Compliant



Learn more

# The Single Sensor for Focused Spaces

Cashier Area

Elevator Lobby

ATM Monitoring

Reception Desk



Cloud-native

On-prem

CC831-HV  
CC830-HV

CC9391-HV  
CC9381-HV-V2  
CC9390-HV  
CC9380-HV-V2

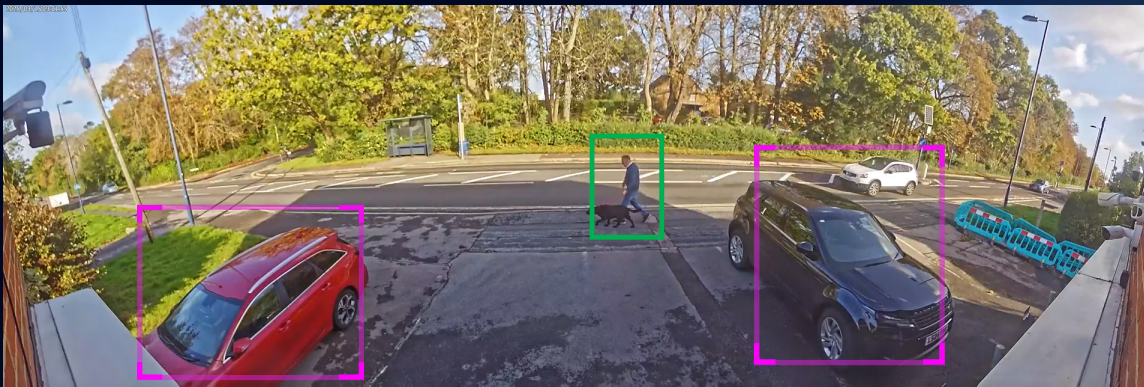
# The Dual Sensor for Mid-Range Coverage

Hallway

Warehouse

Parking Lot

Hotel Lobby



Cloud-native

MS930-EHV

On-prem

MS9390-EHV-V2

# The Quad Sensor for Large-Scale Surveillance

Traffic Intersection

Shopping Mall

Airport

Large Parking Lot



On-prem

MS9321-EHV-V2

